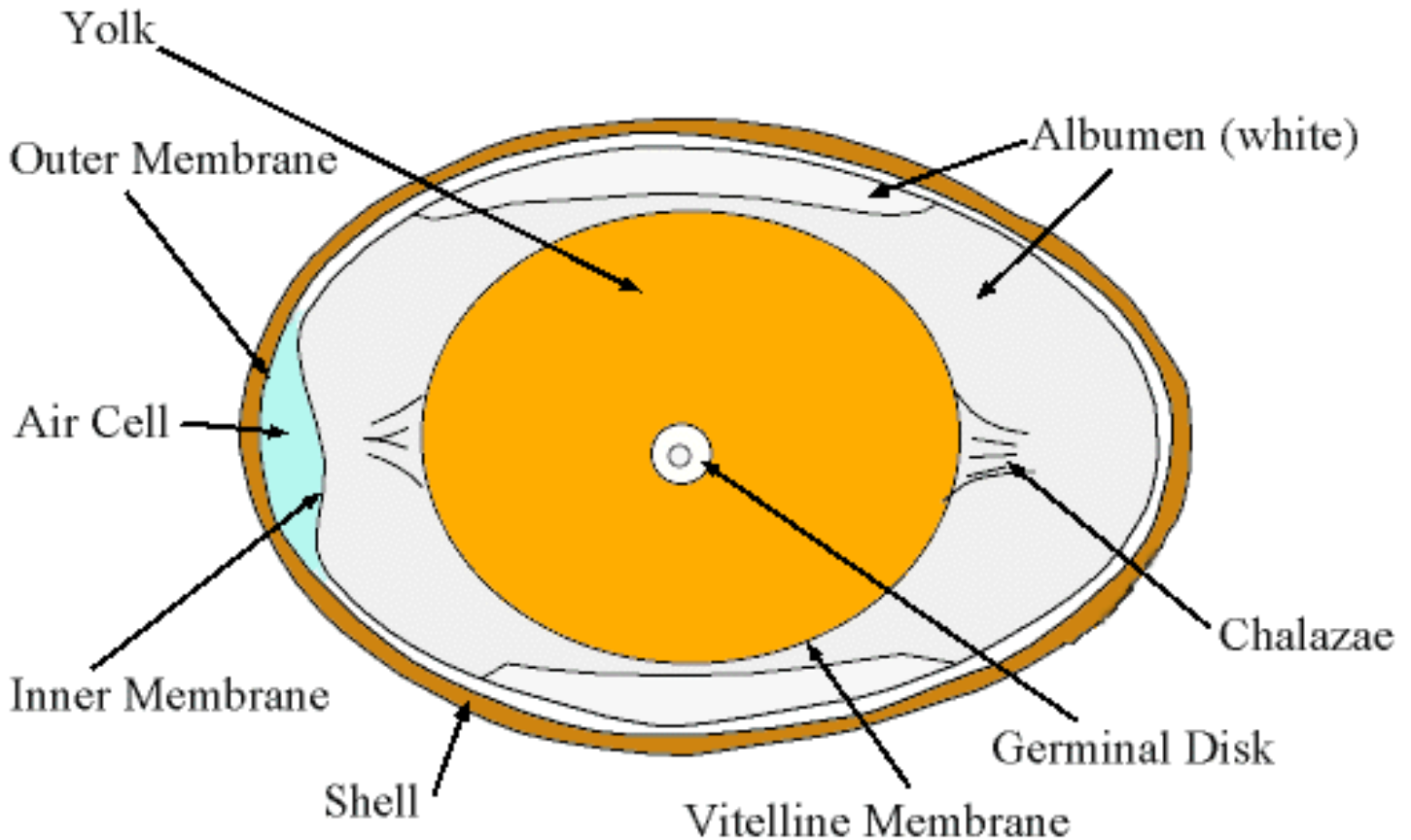


NATIONAL 4-H POULTRY JUDGING MANUAL
Revised December 2020
MARKET EGGS - INTRODUCTION

Chicken egg production is a major agricultural industry in the United States. In a commercial layer operation, eggs are evaluated for quality before being packed by weight (size). Egg quality is independent of egg weight (size) and eggshell color. All shell colors are graded with the same standards. During a poultry judging contest, exterior quality and interior quality are evaluated separately since handling eggs during a contest can influence both the interior and exterior quality.

The parts of an egg are shown in Figure 1.



*Figure 1. Parts of the egg identified.
Photo credit: Shutterstock.com*